

© International Baccalaureate Organization 2021

All rights reserved. No part of this product may be reproduced in any form or by any electronic or mechanical means, including information storage and retrieval systems, without the prior written permission from the IB. Additionally, the license tied with this product prohibits use of any selected files or extracts from this product. Use by third parties, including but not limited to publishers, private teachers, tutoring or study services, preparatory schools, vendors operating curriculum mapping services or teacher resource digital platforms and app developers, whether fee-covered or not, is prohibited and is a criminal offense.

More information on how to request written permission in the form of a license can be obtained from <https://ibo.org/become-an-ib-school/ib-publishing/licensing/applying-for-a-license/>.

© Organisation du Baccalauréat International 2021

Tous droits réservés. Aucune partie de ce produit ne peut être reproduite sous quelque forme ni par quelque moyen que ce soit, électronique ou mécanique, y compris des systèmes de stockage et de récupération d'informations, sans l'autorisation écrite préalable de l'IB. De plus, la licence associée à ce produit interdit toute utilisation de tout fichier ou extrait sélectionné dans ce produit. L'utilisation par des tiers, y compris, sans toutefois s'y limiter, des éditeurs, des professeurs particuliers, des services de tutorat ou d'aide aux études, des établissements de préparation à l'enseignement supérieur, des fournisseurs de services de planification des programmes d'études, des gestionnaires de plateformes pédagogiques en ligne, et des développeurs d'applications, moyennant paiement ou non, est interdite et constitue une infraction pénale.

Pour plus d'informations sur la procédure à suivre pour obtenir une autorisation écrite sous la forme d'une licence, rendez-vous à l'adresse <https://ibo.org/become-an-ib-school/ib-publishing/licensing/applying-for-a-license/>.

© Organización del Bachillerato Internacional, 2021

Todos los derechos reservados. No se podrá reproducir ninguna parte de este producto de ninguna forma ni por ningún medio electrónico o mecánico, incluidos los sistemas de almacenamiento y recuperación de información, sin la previa autorización por escrito del IB. Además, la licencia vinculada a este producto prohíbe el uso de todo archivo o fragmento seleccionado de este producto. El uso por parte de terceros —lo que incluye, a título enunciativo, editoriales, profesores particulares, servicios de apoyo académico o ayuda para el estudio, colegios preparatorios, desarrolladores de aplicaciones y entidades que presten servicios de planificación curricular u ofrezcan recursos para docentes mediante plataformas digitales—, ya sea incluido en tasas o no, está prohibido y constituye un delito.

En este enlace encontrará más información sobre cómo solicitar una autorización por escrito en forma de licencia: <https://ibo.org/become-an-ib-school/ib-publishing/licensing/applying-for-a-license/>.

**Geography**  
**Higher level and standard level**  
**Paper 1 – resource booklet**

Wednesday 12 May 2021 (afternoon)

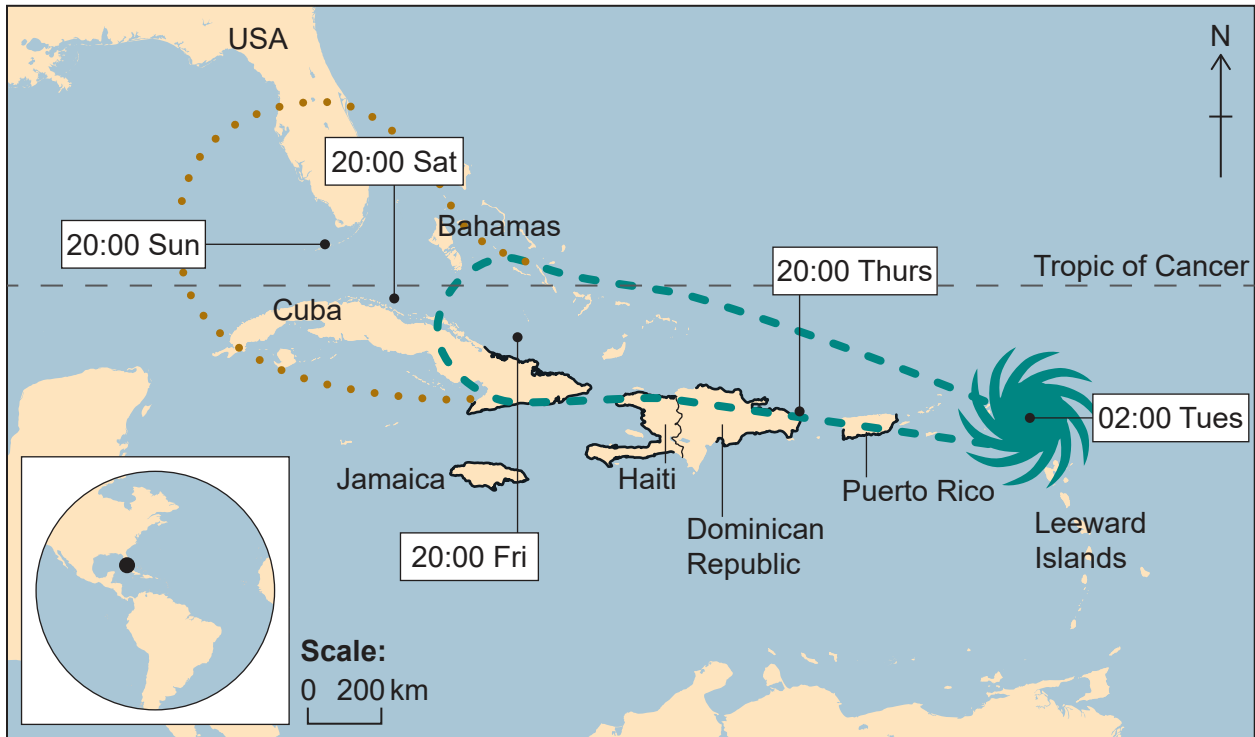
---

**Instructions to candidates**



- Do not open this booklet until instructed to do so.
- This booklet accompanies paper 1.

**Option B — Oceans and coastal margins**

3. The diagram shows the predicted path of Hurricane Irma in August and September 2017.



**Key:**

- Days 1-3
- ..... Days 4-5
-  Hurricane
-  Coral reef

**Option C — Extreme environments**

5. The map shows the location of hot, arid deserts in Australia.



**Key:**

① <i>Pedirka Desert</i>	--- Named desert area
② <i>Tirari Desert</i>	- - - State boundary
③ <i>Sturt Stony Desert</i>	— River
④ <i>Strzelecki Desert</i>	- · - · Seasonal river
<b>ACT</b> Australian Capital Territory	○ City
	□ Capital city

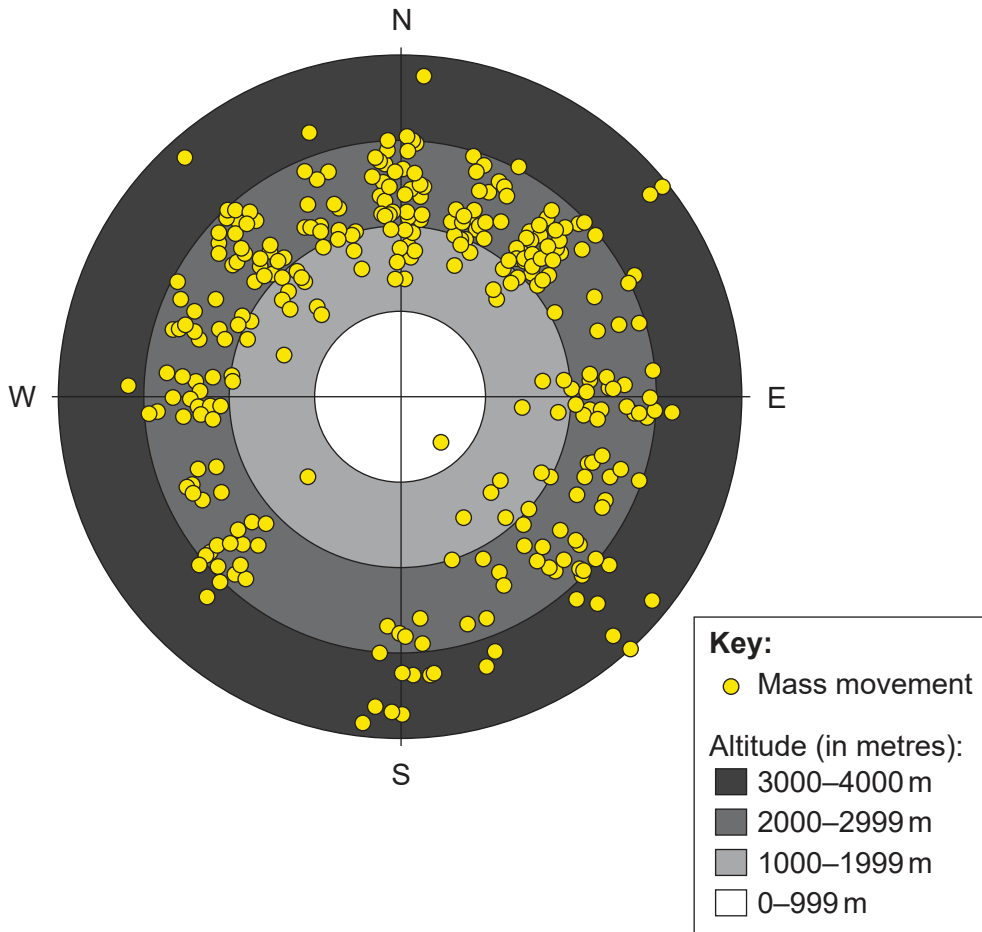
Turn over

Blank page

**Option D — Geophysical hazards**

7. The diagram shows mass movement on slopes in the Swiss Alps between 1995 and 2016. Each dot represents one mass movement.

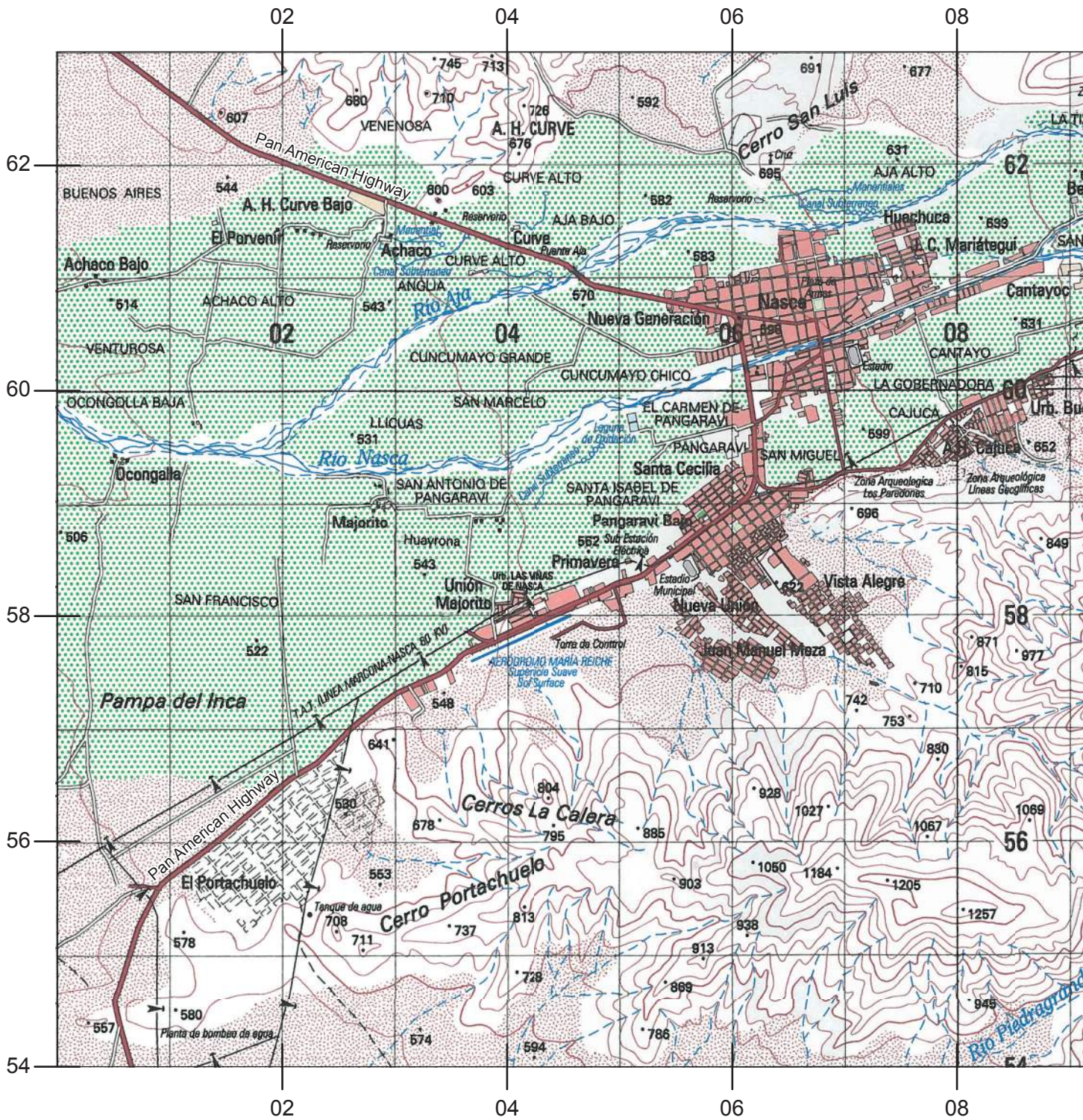
The varying altitudes of the mass movement and the direction each slope faces are shown.

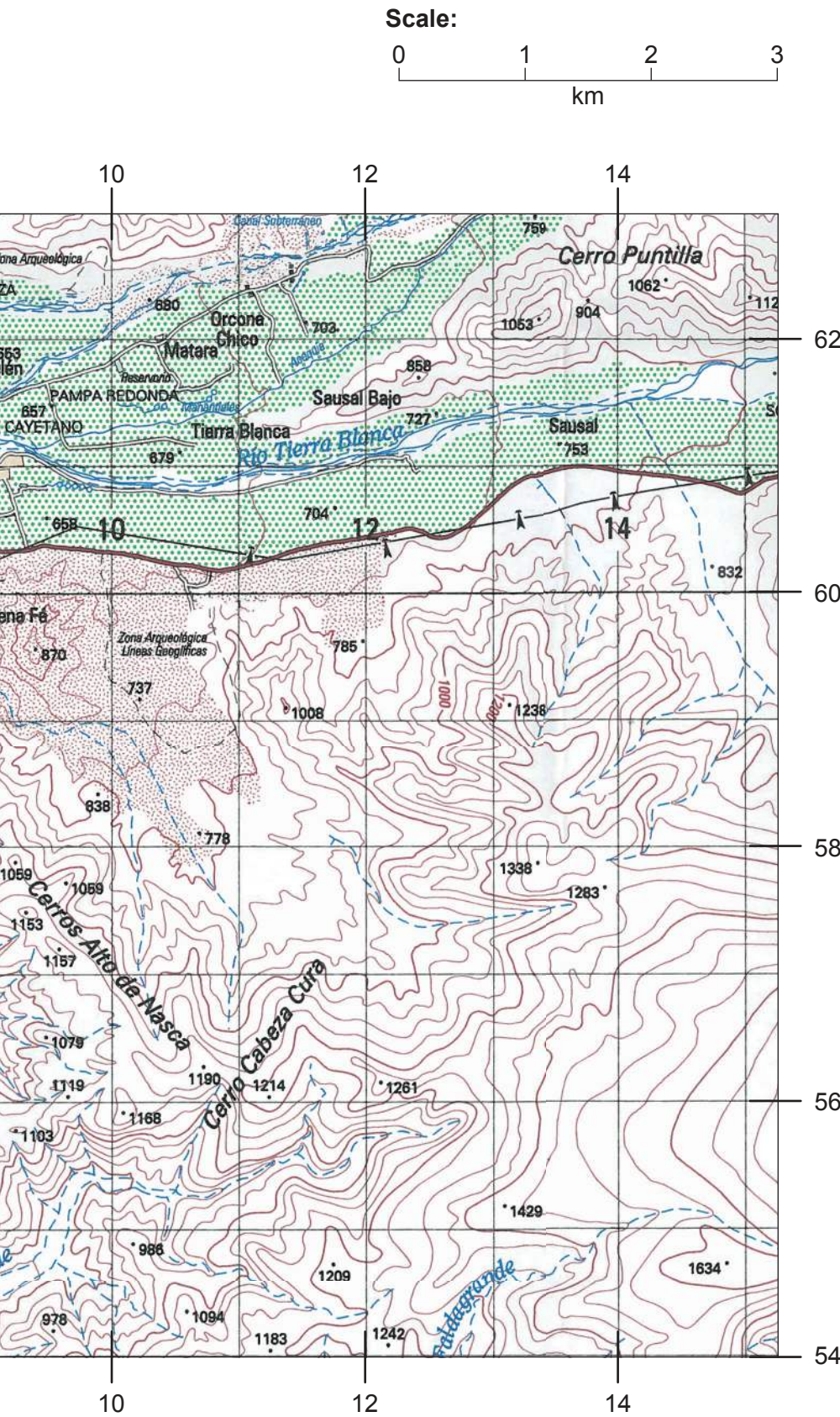


Turn over

### Option F — Food and health

- 11. The map shows part of the Nazca Valley in Peru, a middle-income country. The scale of the map is 1:50 000 and the contour interval is 50 metres.

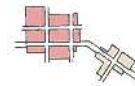




**Key: NASCA, PERÚ**



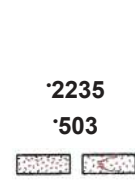
Prepared and published by the Instituto Geográfico Nacional (IGN), Lima, Peru



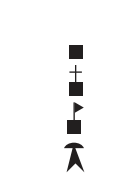
**Populated places**  
Densely built-up areas



**Roads**  
All weather, hard surface:  
Divides highway  
Two or more lanes wide  
One lane wide



**Miscellaneous relief**  
Spot elevation:  
•2235 Highest  
•503 Normal  
Sand, dune



**Miscellaneous**  
Building  
Church  
School  
Powerline



**Airfield runway**  
More than 800m long



**Streams**  
Less than 18m wide  
18m to 25m wide  
Over 25m wide



**Spring, well**  
Perennial,  
Intermittent



**Lakes**  
Intermittent  
Dry



**Vegetation**  
Cultivated land



#### References:

- Option B** From BBC News at [bbc.co.uk/news](http://bbc.co.uk/news). Data from National Hurricane Center.
- Option C** 2013. Deserts in Australia. [online] Available at: [https://commons.wikimedia.org/wiki/File:Deserts\\_in\\_Australia\\_en.png](https://commons.wikimedia.org/wiki/File:Deserts_in_Australia_en.png) CC BY-SA 3.0 <https://creativecommons.org/licenses/by-sa/3.0/> [accessed 17 April 2019]. Source adapted.
- Option D** Kenneth Davis, [geovisualist.com](http://geovisualist.com), data from WSL Institute for Snow and Avalanche Research SLF.
- Option F** Instituto Geográfico Nacional (IGN), 2013. Lima, Peru. *Nasca, Peru*, Series J731, Sheet 1941 3 (30 n 3), 1:50000. Lima: IGN. Source adapted.